



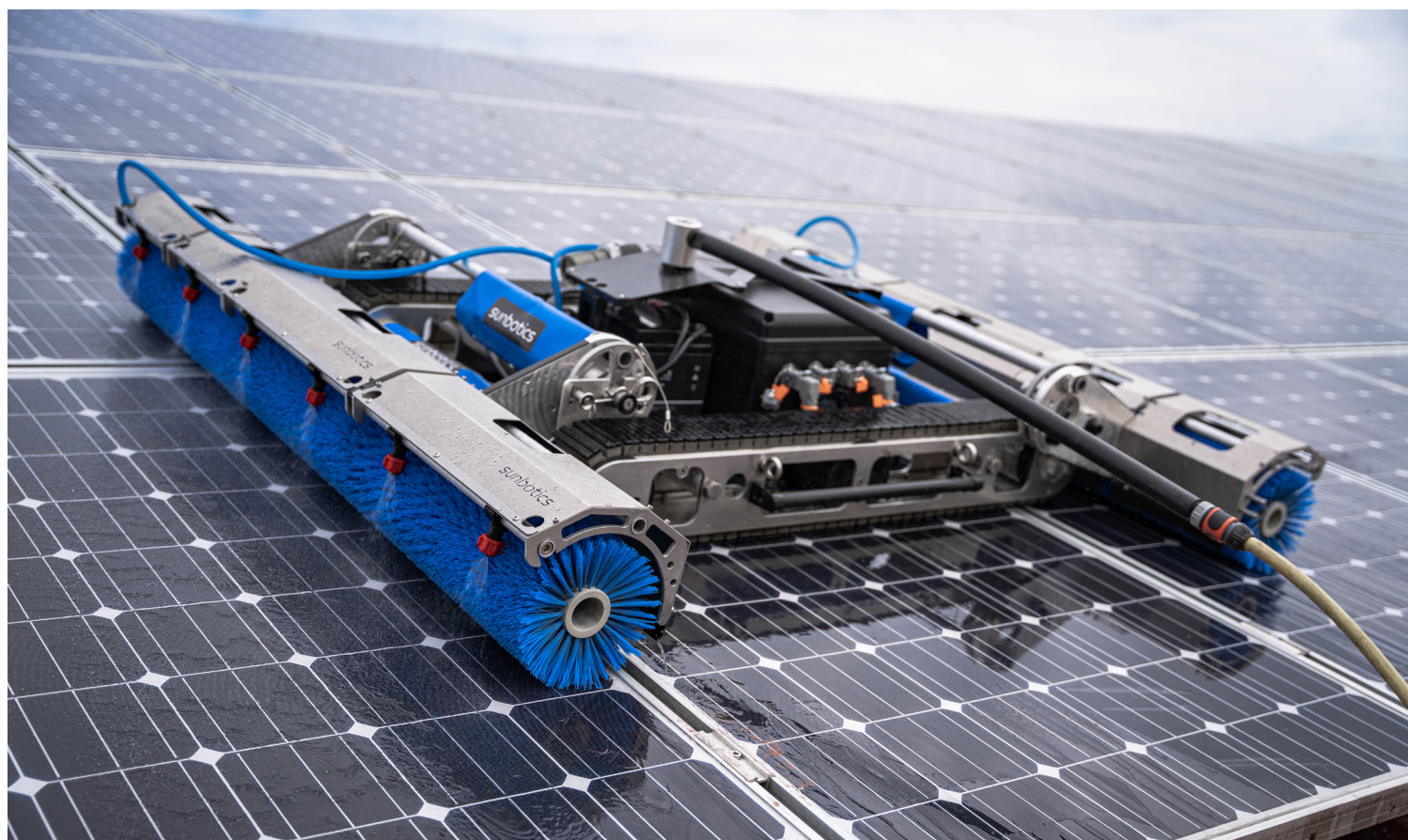
MADE IN GERMANY

# sunbotics

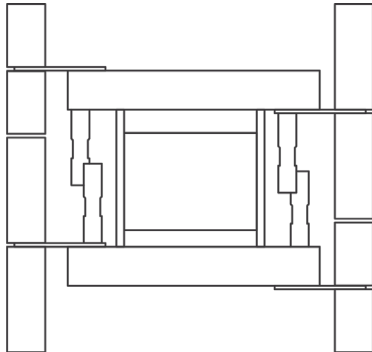
by suntex

## Mobile Cleaning Technology for Photovoltaic and Solar Systems

The sunbotics ensures thorough cleaning and can be adapted to all specific requirements of any PV system thanks to its absolute modularity. Cleaners can use the sunbotics system - either in its basic form or adapt to the challenge at hand by simply using different conversion kits.



# / Modular Allrounder



## Individual and Adaptive

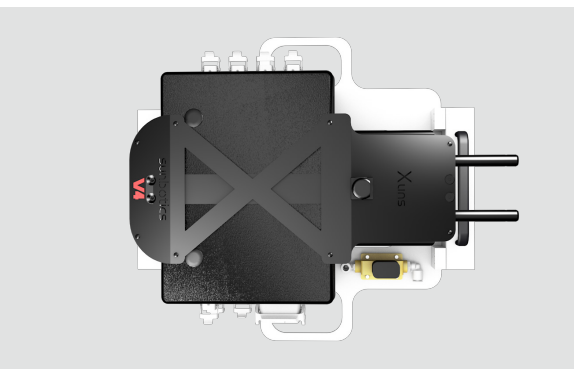
In just a few simple steps, you can retrofit the machine individually, according to your needs. It can be effortlessly extended and / or shortened, brush lengths can be exchanged and what makes it unique, is that the chassis can be adapted in the process. In this way, the sunbotics can cope with even highest inclinations.

## Intelligent Cleaning

The unique mobility of the brushes is made possible thanks to the intelligent carrier arms. Parts of the brushes function independently of one other - meaning they do not move stiffly over the modules, but adapt to the module surface. Regardless of whether the module is bulbous or set lower, our sunbotics cleans without leaving any residue. The form of carrier arms is unique on the market.

## Highly Impervious

All our motors as well as the e-box are equipped with membranes. This means that any condensed water can immediately escape.

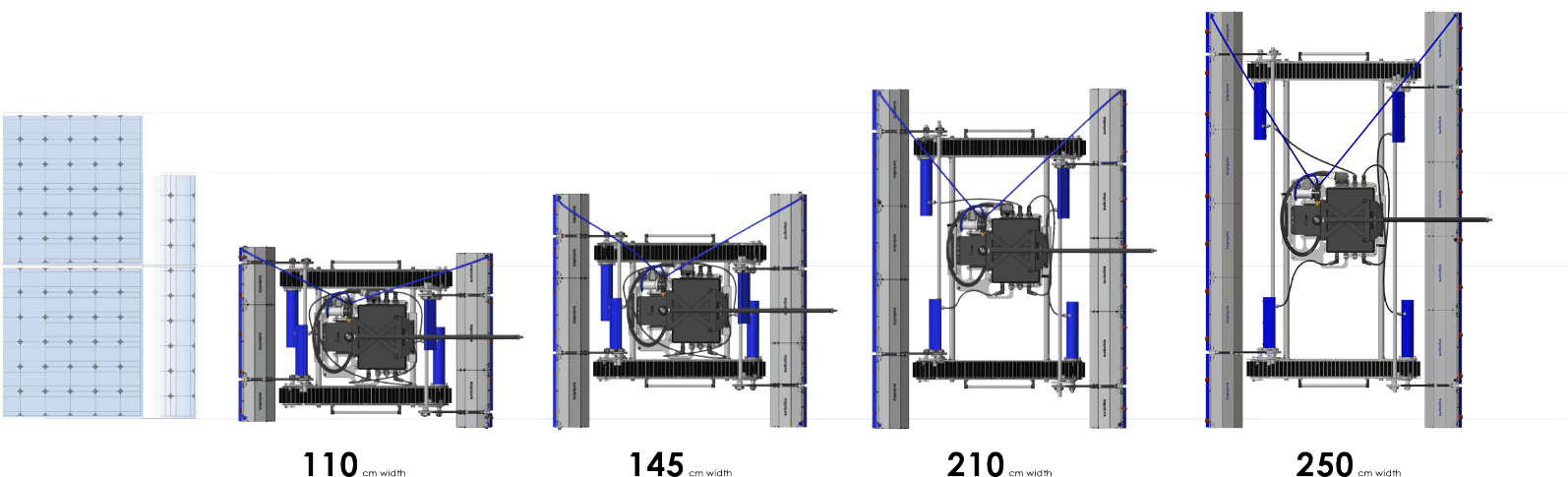


## Protector Laquer

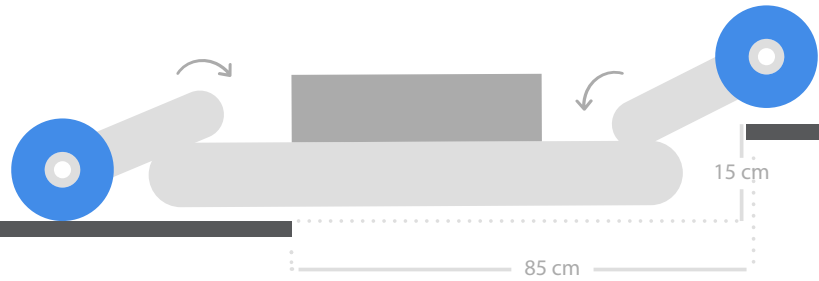
Thanks to the protect lacquer of the e-Box, it has a high resistance to scratches and other sources of impact.

## Power & Battery Operation

The e-Box can either be connected to a power connection or used via battery, to ensure stressfree cleaning. The e-box including all connections has a membrane which has been subjected to a leak test.



# / Features



## Gentle to the Module Surface

The running tracks driving on the module surface preserve the modules thanks to the special rubber profiles. Since the tracks are 90 cm long the weight distribution for the maximum load on the modules is 4,000 pa for the base robot.



## Drive over Module Gaps

Thanks to the stable running tracks the robot can drive over significant module gaps of up to approx. 85 cm without having to lift the robot from one module table to the next. The adjustable brushes allow it to also easily climb differences in height of up to approx. 15 cm.



## Remote Control

Effortlessly control the robot from a distance, ensuring precise cleaning without the need for direct supervision.



## Inclinations of up to 30°

The specially developed rubber profiles of the tracks also provide extra grip when driving on inclinations of up to 30° for the base robot.



## Wet Cleaning

The water connection enables wet cleaning, which makes it easier to remove stubborn dirt.



## Perfect for Transport

Its mobility offers numerous advantages compared to conventional cleaning systems of facilitates your cleaning project considerably.

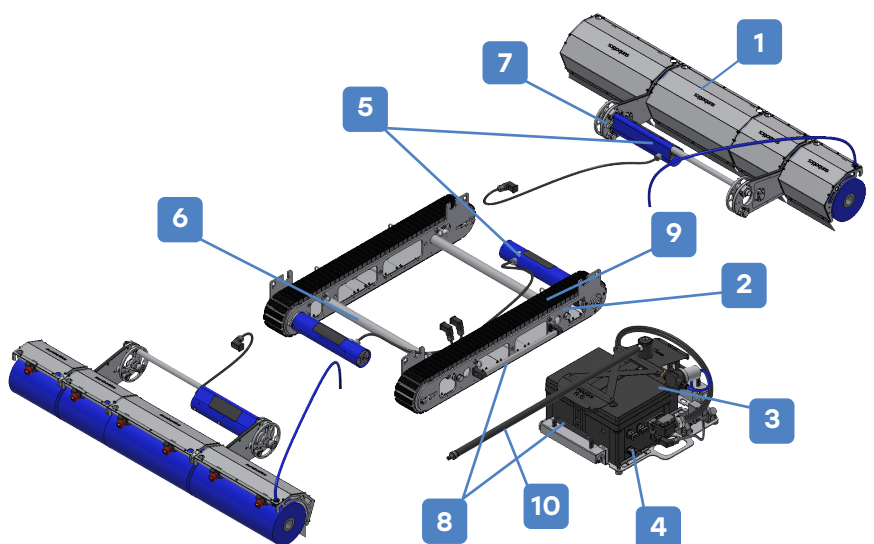


## Construction manual

Scan this QR code for the construction manual of our sunbotics machine at:

<https://www.youtube.com/watch?v=wwZKA5IX8dc>

- 1 Brushmodule with cover
- 2 Drive unit (large)
- 3 Battery
- 4 e-Box (electronic Box)
- 5 Motor
- 6 Connecting rod drive unit
- 7 Carrier arm with quick coupling system
- 8 Handle bar
- 9 Module glider
- 10 Water connection



# / Technical Data\*

## Metrics

Width	110 cm*	145 cm	210 cm
Length	155 cm	155 cm	155 cm
Height	38 cm	38 cm	38 cm

\* Regular width of solar systems with east/west mounting

## Weight

Total	84 kg	89 kg	99,5 kg
Central unit	17 kg	17 kg	17 kg
Chassis	31 kg	31 kg	32,5 kg
Brush unit	2 x 18 kg	2 x 20,5 kg	2 x 25 kg
Load calculation	3.820 Pa	3.910 Pa	4.160 Pa

## Operation

Maximum speed	25 m/min	25 m/min	25 m/min
Cleaning speed	1.470 m <sup>2</sup> /h	1.940 m <sup>2</sup> /h	2.790 m <sup>2</sup> /h
Max. inclination of solar modules	25° - 30°	25° - 30°	20° - 25°
Water supply	0-600 l/h 2-4 bar	0-600 l/h 2-4 bar	0-600 l/h 2-4 bar
Batterie performances	120 min	120 min	90 min
Brush rotation	200 rpm	200 rpm	200 rpm

## Extras

Modular build  
Warning system for low battery  
Maintenance package for small repairs on site  
Protection class for motors (imperviousness) IP 65  
Splash guards for additional protection of motors  
Adjustable water flow



### Contact

[sales@sunbrushmobil.com](mailto:sales@sunbrushmobil.com)  
+49 (0) 8332 243 43 - 0  
[www.sunbrushmobil.com](http://www.sunbrushmobil.com)

### SunBrush mobil GmbH

Am Bahnhof 14  
87760 Lachen



### Digital Flyer

Scan this QR code for  
our digital Flyer.