

MADE IN GERMANY

Eagle

For particularly tightly-build solar parks

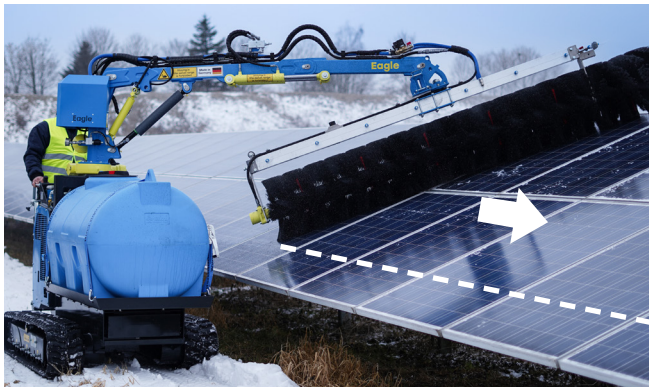
The Eagle offers the perfect solution for particularly tightly built-up solar parks and narrow aisles. In combination with a crawler chassis, the eagle cleans the most inaccessible PV parks with tables of up to 4 meters.



/ Cleaning concept

Thanks to the narrow design of the Eagle, it is possible to clean in the tightest of spaces. The crawler chassis can even be driven right under the PV module, which means that cleaning solar parks in tight spaces is no longer a challenge.

The length of the brush arm is 3m
Example cleaning mode for 4 m modular table:



Cleaning path 1

The upper area of the module table is cleaned first during forward operation.



Cleaning path 2

The lower area of the module table is then cleaned in the return flow.

/ Carrier Vehicle Options



SunBrush Xplorer



Teleskoplader



Skid Steer



AVANT

/ Features



WashTronic System

Automatic levelling adjustment on uneven terrain. The contact pressure between the brush and the module surface is set once and remains constant throughout the entire cleaning process. Damage to the module is therefore impossible if operated correctly.



180° Cleaning

The hydraulically swivelling motor enables cleaning on the right and left side of the carrier vehicle.



Wet Cleaning

The water pipes are built into the entire machine as standard. Double watering is possible via the joystick in case of stubborn dirt.



TrackFlex Effekt

Enables the boom angle to be adjusted and ensures a narrow row width, as the carrier vehicle can be driven closer to the panels, resulting in minimum space requirements for the rows.



Freely pivoting

The brush system is suspended via a freely swivelling suspension point. This allows the brush to adjust its own angle if the panels move during the course of the day and/or the floor contours change.



Water Tank

Secure attachment of the water tank via the carrier bracket on the chassis.



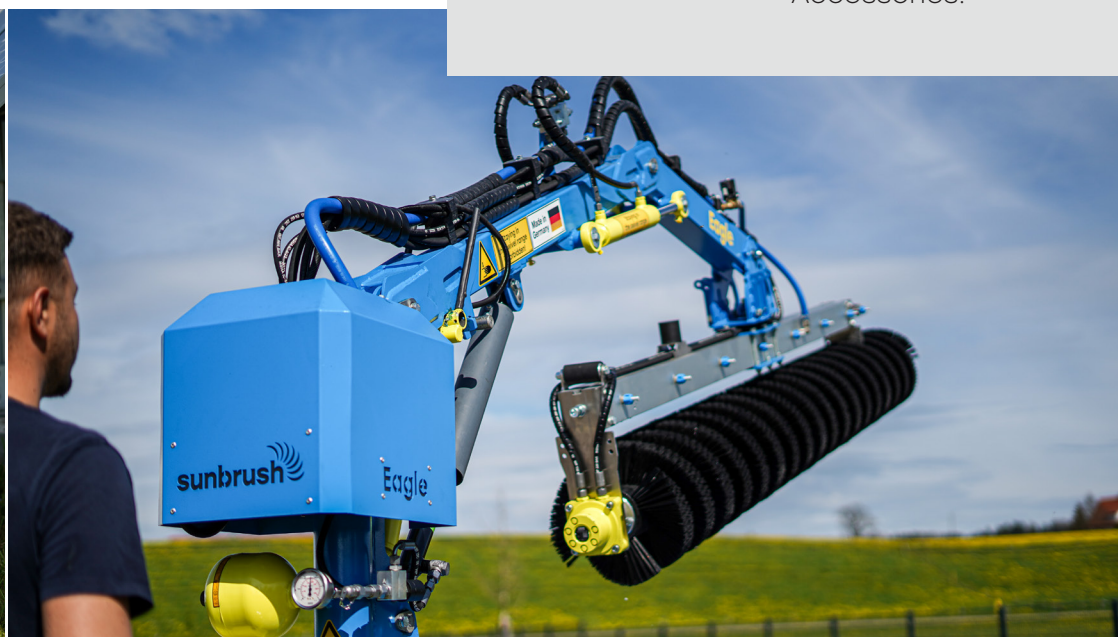
Simple Control System

Intuitive control via foot pedals from the driver's cab.



Accessory

Scan this QR-Code for more Information to our SunBrush Accessories.



/ Technical Data*

Drive system	Fully hydraulic
Operating temperature range	-20 / +50 °C
Oil filling	Hydraulic oil, SAE 5W30
Brush material	Mypren (polypropylene) UV-resistant
Brush diameter	350 mm or 500 mm
Control system	Proportional Can-Bus Joystick
Module overlay pressure security system	WashTronic: patented levelling / support pressure mechanism
Swivelling range	280°, Cleaning on the left and right side of the carrier vehicle possible
Spray settings for water	One-sided or double-sided spraying
Operating pressure of water system	4 Bar
Travelling speed during cleaning	1,5 - 4 km/h
Water consumption	ca. 0,25 L per m ² / 0,5 L per module
Weight without vehicle	300 - 350 kg

Cleaning performance

3 m brush

Panel arrangement 1 Portrait

Dry Cleaning (2-4 km/h)

Panel/h 2.000 - 4.000 pcs

Area output 4.000 - 8.000 m²

Wet Cleaning (1,5 - 2,5 km/h)

Panel/h ca. 1.500 - 2.500 pcs

Area output ca. 3.000 - 5.000 m²

* Data depends on local conditions and level of soiling



Contact

sales@sunbrushmobil.com
+49 (0) 8332 243 43 - 0
www.sunbrushmobil.com

SunBrush mobil GmbH

Am Bahnhof 14
87760 Lachen



Digital Flyer

Scan this QR code for our digital Flyer.